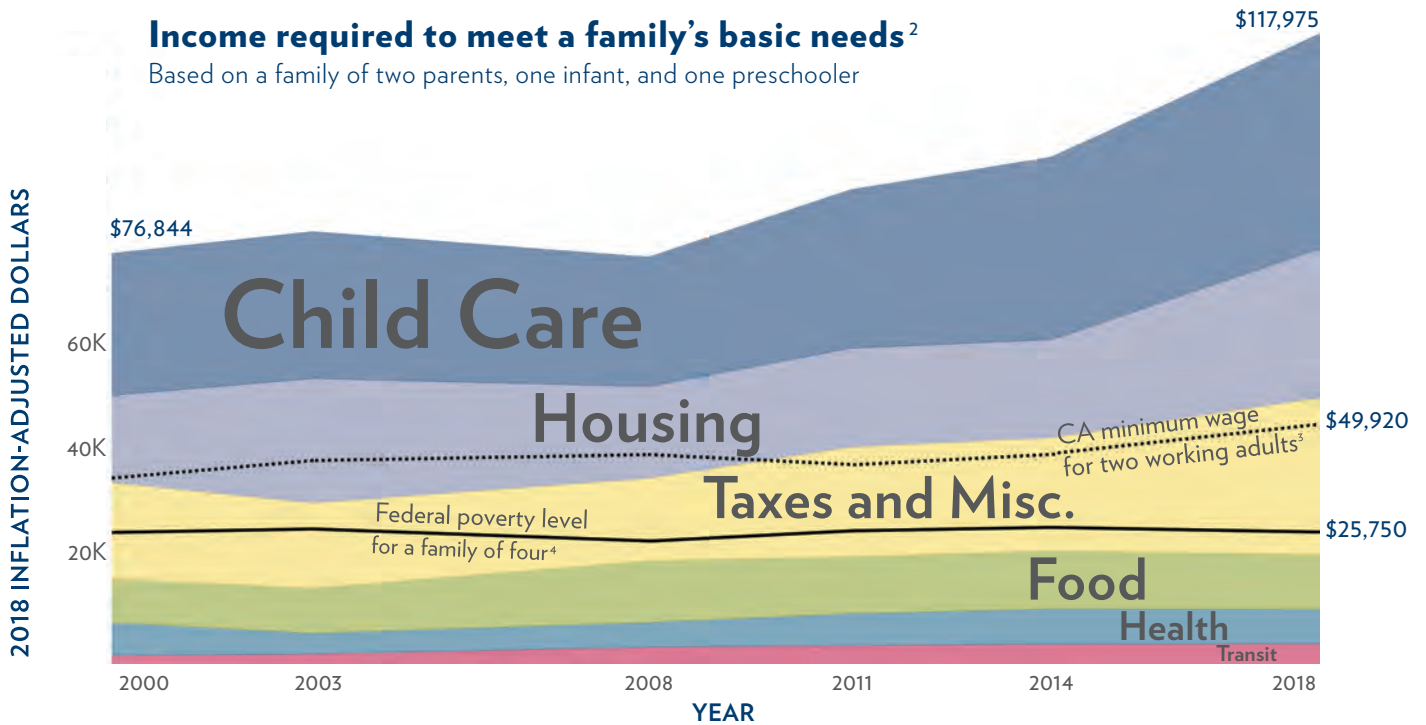


Families are in economic distress and struggling to meet basic needs.

Children who are healthy, food secure, and well-rested have significantly higher levels of academic achievement.¹ By addressing families' basic needs, we can help young children develop to their full potential and succeed later in school and career.

Income required to meet a family's basic needs²

Based on a family of two parents, one infant, and one preschooler



Population of Alameda County: 1,629,615

Population of 0-5 in Alameda County: 116,890

- More than **3,070** families in Alameda County live at or below the poverty level.⁵
- **13%** of children under 5 years live below poverty level.⁶
- Households by race that fall below the Self-Sufficiency Standard:²
 - African American—**53%**
 - Asian/Pacific Islander—**28%**
 - Latinx—**51%**
 - Native American—**29%**
 - White—**20%**

CHILD CARE COST IS AN INCREASING BURDEN ON FAMILIES²

Full-time cost for one infant



2000
\$12,000
(Inflation adjusted to 2018)

2018
\$21,888

+82%
increase in child care cost 2000-2018

UC Berkeley Tuition⁷ 2019-20
\$14,254

Child care cost has risen far above the cost of state university tuition.

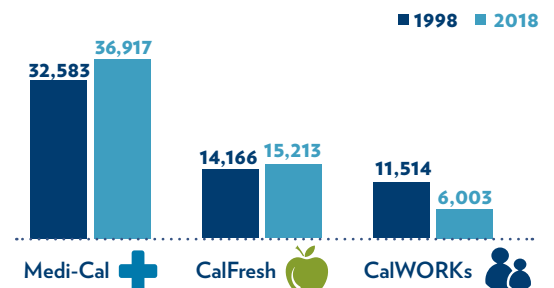
CHILDREN EXPERIENCING HOMELESSNESS⁸



2013-2014 **3,477** 2016-2017 **4,574**

+32%
increase in child homelessness in only three years

NUMBER OF CHILDREN 0-6 RECEIVING PUBLIC BENEFITS⁹





OUR WORK IN ALAMEDA COUNTY DISTRICT 3 – SUPERVISOR WILMA CHAN

First 5 takes an equity-driven approach to improve the lives of children and their families through place-based efforts, partnerships, and community-driven programming. Our work in District 3 includes:

Corresponding map on next page.

● **Help Me Grow (HMG)**

Our HMG program helps families and providers detect early signs of developmental, social-emotional, and learning concerns before a child enters school. HMG helps families navigate complex systems to receive the necessary supports they need. Between 2014 to 2018 in District 3, nearly **3,100 calls and referrals** were made to the HMG phone line.

▲ **Library Partnerships**

We partner with library systems throughout the county to develop story times with playgroups that promote kindergarten readiness in underserved communities. In addition, we supply partner libraries with Learning Adventure Backpacks that can be checked out by families throughout the year. Backpacks contain books and materials, in English and Spanish, that build kindergarten readiness skills in four domains: literacy, math, science, and social skills.

◆ **Kindergarten Readiness Assessment**

The Kindergarten Readiness Assessment provides a detailed portrait of the social, emotional, and academic skills possessed by incoming kindergarten students across Alameda County. We have funded Applied Survey Research to administer the assessments since 2008, as well as produce a longitudinal study of kindergarten readiness correlated to third grade achievement. Of the nearly **350 students** that were assessed for kindergarten readiness in the schools in your district in 2017, **37% were “fully ready.”** The county average was 44% of children ready for kindergarten.

◆ **Neighborhoods Ready for School (NRFS)**

We make NRFS grants to support neighborhood-based and resident-led strategies that promote child and family well-being. NRFS grantees build infrastructure and enhance existing community assets to provide safe places for families to learn, play, grow, and even become employed. The program seeks to increase neighborhood-level coordination of existing services in support of children’s school readiness and community well-being and intentionally promotes family leadership and civic engagement opportunities.

First 5 Alameda County FY 18-19 Contractors and Grantees in District 3

① Alameda Professional Child Care Association (\$7,000)

Nearly 80 providers attended this conference.

Funding to provide Quality Counts resources at a conference for family child care providers by leveraging connections and skills of Alameda Professional Child Care Association members.

② Friends of the Oakland Public Library (\$13,400)

Nearly 80 children and primary caregivers attended story times and accessed resources.

Funding to provide Quality Counts resources for family, friend, and neighbor caregivers by leveraging Oakland Public Library’s current story times.

③ Oakland Unified School District (\$202,000)

More than 1,300 families participated in school readiness activities.

Funding to support Summer Pre-K (SPK) programs and provide Early Childhood Education (ECE) and K-12 teachers with professional development and orientation to the SPK model. Funding also supports a School Readiness Coordinator to develop and implement year-round school readiness and transition programming, including a student passport/snapshot form and a variety of family and child learning activities.

④ Asian Health Services (\$50,000)

Funding to develop the requirements and workflow protocols for automating developmental screening within the Community Health Clinic Network electronic health record system.

⑤ Alameda County Public Health Department (\$970,000)

More than 300 children and primary caregivers served. More than 250 pediatric providers served.

Funding to integrate First 5-funded home visiting programs and infrastructure supports into a countywide system and to provide training, technical assistance, and consultation services to Child Health and Disability Prevention and other pediatric practices serving high-need families.

⑥ ALL IN Alameda County, part of NRFS (\$469,760)*

More than 240 children and primary caregivers served.

Funding to build infrastructure in neighborhoods to provide places for families to learn, plan, and achieve their goals; increase neighborhood-level coordination to provide a comprehensive menu of resources to support family protective factors, build community, and increase children’s school readiness; and increase family leadership and civic engagement opportunities.

⑦ City of Alameda, Alameda Free Library (\$24,975)

More than 300 children and primary caregivers participated in story times and received resources.

Funding to provide Quality Counts Pathway resources for family, friend and neighbor caregivers at Neighborhood Partnership sites by leveraging current story times.

⑧ Family Resource Navigators (\$964,000)

Nearly 700 primary caregivers and more than 500 children with special needs were referred to and received resources and navigation.

Funding to provide Help Me Grow Family Navigators; support coordination and administration of Help Me Grow family leadership activities; and provide support services to families with children with special needs.

⑨ San Leandro Public Library (\$17,700)

Nearly 200 families received resources and participated in story times.

Funding to provide Quality Counts resources for family, friend, and neighbor caregivers by leveraging San Leandro Public Library’s current story times.

⑩ Davis Street Community Center (\$40,000)

19 providers received training.

Funding to provide coordinated training for family, friend, and neighbor caregivers and individual training for Alternative Payment Family Child Care Providers who care for children birth to 5 years old in Alameda County.

*Date range March to December 2018.

Total District 3 Population: 325,811¹⁰



**District 3
18,784**
children under
5 years

1.2%
of the total Alameda
County population

5.8%
of the total
District 3 population

Families in poverty in District 3⁵



10.3%
of families with
children under age
5 living below the
poverty level



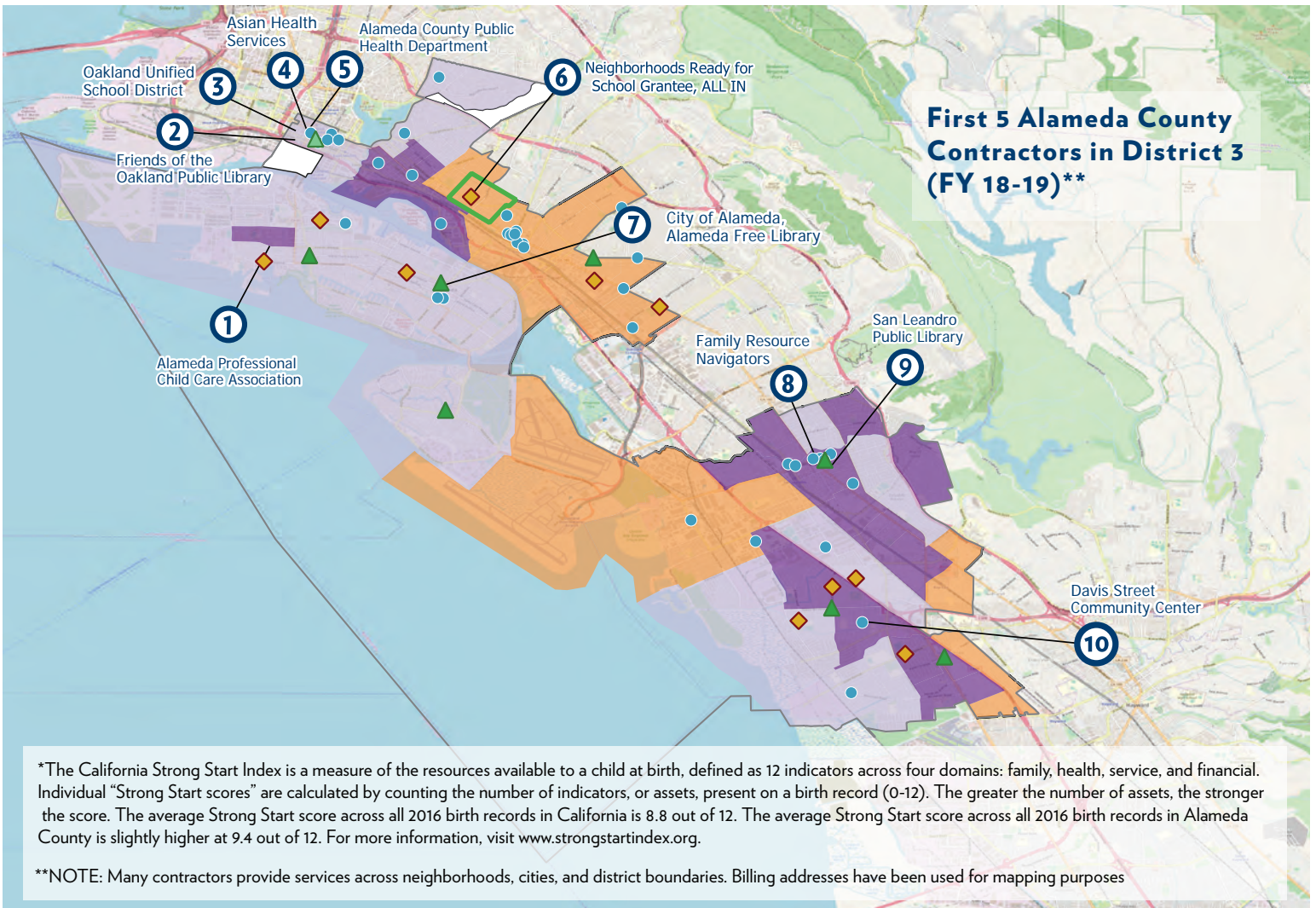
763
families with children
under age 5 living
below the poverty
level

2016 Strong Start Index Score*

- Above County Average
- Below State Average
- Below County Average
- No Data Available

Legend

- Help Me Grow provider (2013-2019)
- Library partner
- Participating 2017 Kindergarten Readiness Assessment school

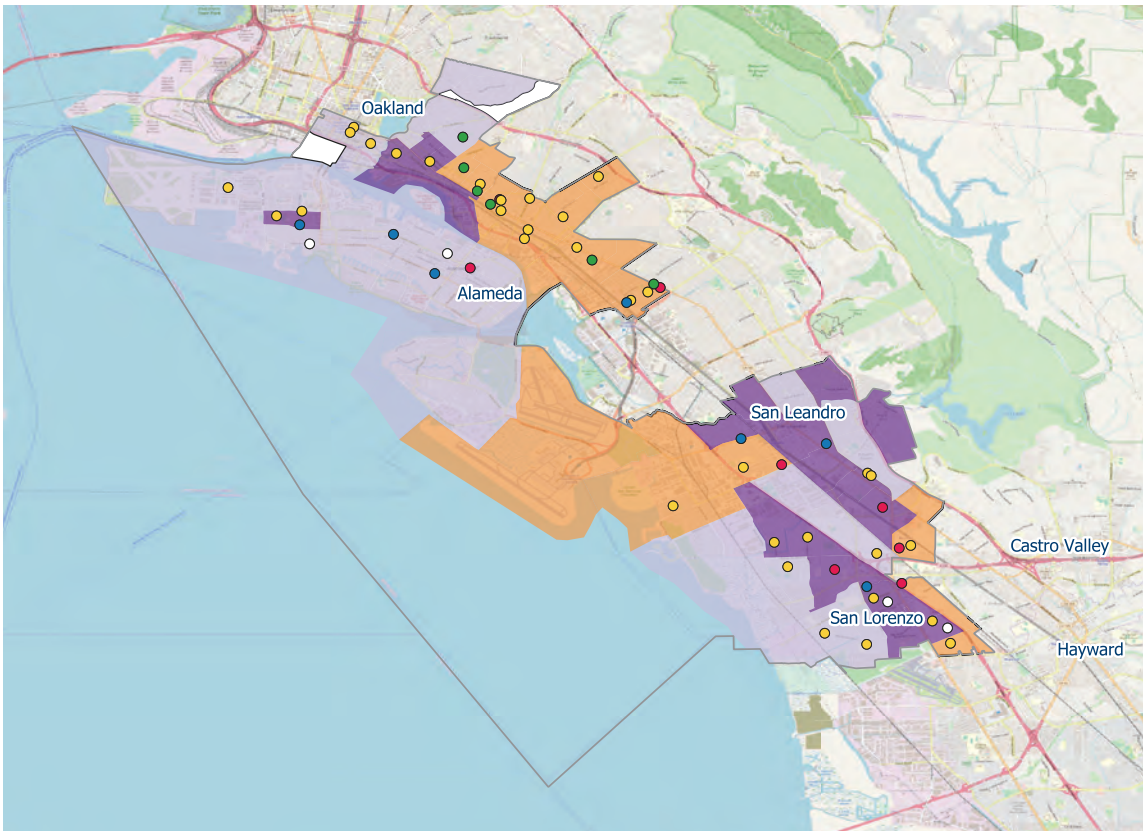
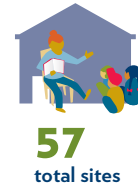


*The California Strong Start Index is a measure of the resources available to a child at birth, defined as 12 indicators across four domains: family, health, service, and financial. Individual “Strong Start scores” are calculated by counting the number of indicators, or assets, present on a birth record (0-12). The greater the number of assets, the stronger the score. The average Strong Start score across all 2016 birth records in California is 8.8 out of 12. The average Strong Start score across all 2016 birth records in Alameda County is slightly higher at 9.4 out of 12. For more information, visit www.strongstartindex.org.

**NOTE: Many contractors provide services across neighborhoods, cities, and district boundaries. Billing addresses have been used for mapping purposes

We invest in quality early care and education to build the capacity of providers and child care sites through rating, coaching, and professional development to improve the quality of early childhood education programs. Sites are rated through our Quality Counts program and those ratings can be accessed by families.

District 3 child care sites participating in First 5's Quality Counts program.



Legend

2016 Strong Start Index Score

- Above County Average
- Below County Average
- Below State Average
- No Data Available

FY 2018-2019 Quality Counts rating (5 = highest quality)

- Rating: 5
- Rating: 4
- Rating: 3
- Rating: 1 or 2
- No Rating

*This information includes Step 2 and Step 3 sites, some of which have not received a rating; Center-Based Care and Family Child Care Sites that are, or will be rated; sites that closed or dropped from Quality Counts at some point during the report year; and sites that dropped prior to the reporting year, but whose rating is still valid.

1. Ickovics, J. R., Carroll-Scott, A., Peters, S. M., Schwartz, M., Gilstad-Hayden, K., & McCaslin, C. (2014). Health and Academic Achievement: Cumulative Effects of Health Assets on Standardized Test Scores Among Urban Youth in the United States. *Journal of School Health, 84*(1), 40-48. doi: 10.1111/josh.12117. Federal poverty level is based on a family of four. California minimum wage shown is for two working adults.
2. Insight Center. Family Needs Calculator (formerly the Self-Sufficiency Standard). Retrieved from <https://insightcced.org/2018-family-needs-calculator/>
3. Department of Industrial Relations. Minimum Wage (income of two full-time working adults at California minimum wage, as of January 1, 2019). Retrieved from https://www.dir.ca.gov/dlse/FAQ_MinimumWage.htm
4. US Department of Health & Human Services. US Federal Poverty Guidelines Used to Determine Financial Eligibility for Certain Federal Programs. Retrieved from <https://aspe.hhs.gov/poverty-guidelines>
5. U.S. Census Bureau, 2013-2017 American Community Survey 5-Year Estimates, Table S1702 ("Poverty Status in the Past 12 Months of Families")
6. United States Census Bureau. 2016 American Community Survey 1-year Estimates. Retrieved from <https://www.census.gov/programs-surveys/acs/technical-documentation/table-and-geography-changes/2016/1-year.html>
7. University of California, Berkeley. Cost of Attendance. Retrieved from <https://financialaid.berkeley.edu/cost-attendance>
8. Report to Alameda County Office of Education on McKinney-Vento Needs by HTA.
9. Alameda County Social Services Agency
10. United States Census Bureau. 2013-2017 American Community Survey 5-year Estimates. Retrieved from <https://www.census.gov/programs-surveys/acs/technical-documentation/table-and-geography-changes/2017/5-year.html>. 322,388 estimate of population for whom poverty status is determined.