



NEIGHBORHOODS READY FOR SCHOOL: ALL IN ALAMEDA COUNTY

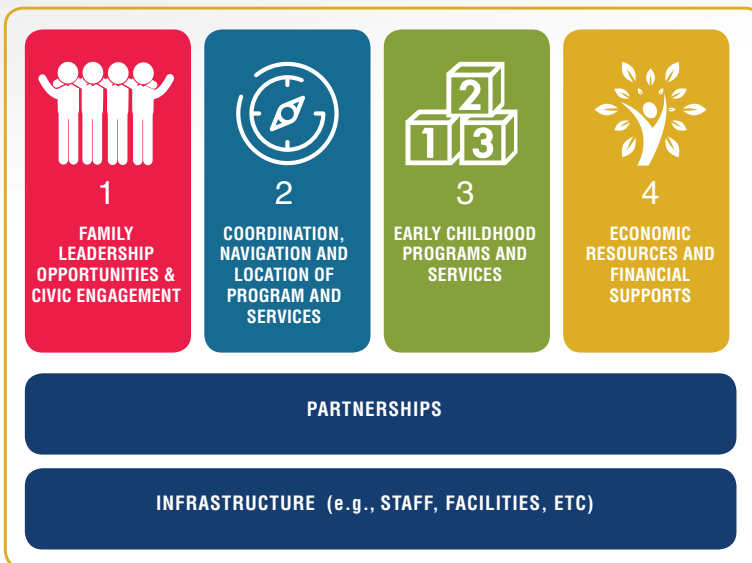


School readiness programs in the neighborhoods that need them the most

Neighborhoods Ready for School (NRFS) is a place-based approach that promotes child- and family-friendly communities, strong families, and school readiness. The strategy informs First 5 Alameda County’s policy agenda as well as service delivery and investments. NRFS coordinates existing services and programs and supports strategic investments in infrastructure to enhance and create community assets like Family Resource Centers.

Program Components

There are four main strategic areas that are supported by partnerships and infrastructure.



ONLY 44% OF ALAMEDA COUNTY CHILDREN ARE READY FOR KINDERGARTEN IN ALL FOUR BASIC BUILDING BLOCKS OF SCHOOL READINESS.

2017 Alameda County Kindergarten Readiness Assessment

NRFS Grantees

THE FIRST COHORT OF NEIGHBORHOODS READY FOR SCHOOL GRANTEES RECEIVED A 16-MONTH GRANT OF \$470,000:

ALL IN ALAMEDA COUNTY See page 2 for detail.

LINCOLN is launching an Early Childhood Initiative and opened a Family Resource Center, designed by West Oakland residents.

ROOTS COMMUNITY HEALTH CENTER is developing the East Oakland Ready for School Network that will improve health outcomes and school readiness, particularly for African American families with children ages birth to five years.

UNION CITY FAMILY CENTER is enhancing its existing pipeline of supports to increase resources and programming for families with young children to support school readiness in the Decoto Community.

Funding for NRFS sites

\$5,451,584 + **\$2,503,301** = **\$7,954,885**

FIRST 5 INVESTMENT + LEVERAGED FUNDS = TOTAL INVESTMENT
3/1/18-6/30/21



NEIGHBORHOODS READY FOR SCHOOL: ALL IN ALAMEDA COUNTY

ALL IN Alameda County is an innovation incubator within county government that's designed to find new solutions and apply creative thinking to remove barriers and take advantage of opportunities for progress. As part of Neighborhoods Ready for School (NRFS), All IN Alameda County partnered with Lotus Bloom, EBAYC, and Trybe to launch a **Family Resource Center** in Oakland's San Antonio neighborhood.

Impact At-a-Glance



84% OF PARENTS/CAREGIVERS ARE BETTER ABLE TO SUPPORT THEIR CHILD'S GROWTH AND WELL-BEING



1,454 SQUARE FEET UPGRADED/RENOVATED AT SAN ANTONIO FAMILY RESOURCE CENTER, INCLUDING FAMILY-FRIENDLY MEETING SPACES AND FURNISHINGS



6 NEW AND ENHANCED EARLY CHILDHOOD PROGRAMS AND SERVICES, INCLUDING:



242 PARENTS/CAREGIVERS AND CHILDREN 0-5 SERVED



28 COMMUNITY PARTNERS ENGAGED IN PROCESS

40 PARENTS/CAREGIVERS ENROLLED IN AT LEAST ONE SUPPORT

92% OF PARENTS/CAREGIVERS REPORTED THE NRFS PROGRAM WAS RESPECTFUL OF THEIR PERSONAL BACKGROUND

57% OF PARENTS/CAREGIVERS IMPROVED THEIR FINANCIAL WELL-BEING

92% OF PARENTS/CAREGIVERS WERE SATISFIED WITH THE NRFS PROGRAM

86% OF PARENTS/CAREGIVERS REPORTED THAT THE UPGRADED/RENOVATED SPACES MEET THEIR FAMILY'S NEEDS

1. Family Café series
2. Parent-led community outreach events
3. Navigation services from parent outreach workers for families with children birth to age 5
4. Multicultural and developmental playgroups

Parents/caregivers and children served at this site

African-American/ Black 25%	Alaska Native/ American Indian 1.4%	Asian 27%	Latinx 35%
Multi-racial 0.7%	Native Hawaiian/ Pacific Islander 1.4%	White 8.8%	

ALL IN Funding

\$1,362,760 First 5 Investment	+	\$1,084,370 Grantee Investment
--	----------	--

Total Investment = \$2,447,130

3/1/18-6/30/21

Catalyzing civic engagement

This past year, there have been serious injuries to pedestrians, including the death of a mom and her young child, in the San Antonio neighborhood, which is home to many child care centers and elementary schools. The San Antonio Family Resource Center mobilized the school and neighbor communities to form a campaign to fight to slow traffic and increase pedestrian safety. The campaign started with four large signs designed by a local artist and included decorations from neighborhood families. The group plans to meet with the Oakland Department of Transportation to advocate for safer pedestrian routes.



About this neighborhood



136
babies born to mothers in site service area



14
child care providers (family child care, family friend, neighbor, center) claimed an Alternative Payment Voucher

First 5 Alameda County in the community



7
Quality Counts sites enrolled



12
Children enrolled into Home Visiting by First 5 Perinatal Health Outreach Coordinator



80
Families served by Help Me Grow



Legend

Oakland Unified School District Public Schools

- 1 Roosevelt Middle School
- 2 Garfield Elementary School
- 3 Community School for Creative Education
* Alameda County Office of Education charter
- 4 Opportunity Academy
- 5 Think College Now
- 6 Achieve Academy
- 7 Urban Promise Academy

Preschools enrolled in Quality Counts

- 1 Garfield Elementary
- 2 San Antonio CDC
- 3 Little Sprouts Preschool
- 4 Centro Infantil De La Raza
- 5 Unity Council Child Center
- 6 Sungate
- 7 International CDC

Authorized Women, Infants, and Children (WIC) Vendor

- 1 A&G Market
- 2 El Ranchito Market
- 3 Fresh and Easy 2
- 4 Mi Carnal Market
- 5 Oaktree Market

