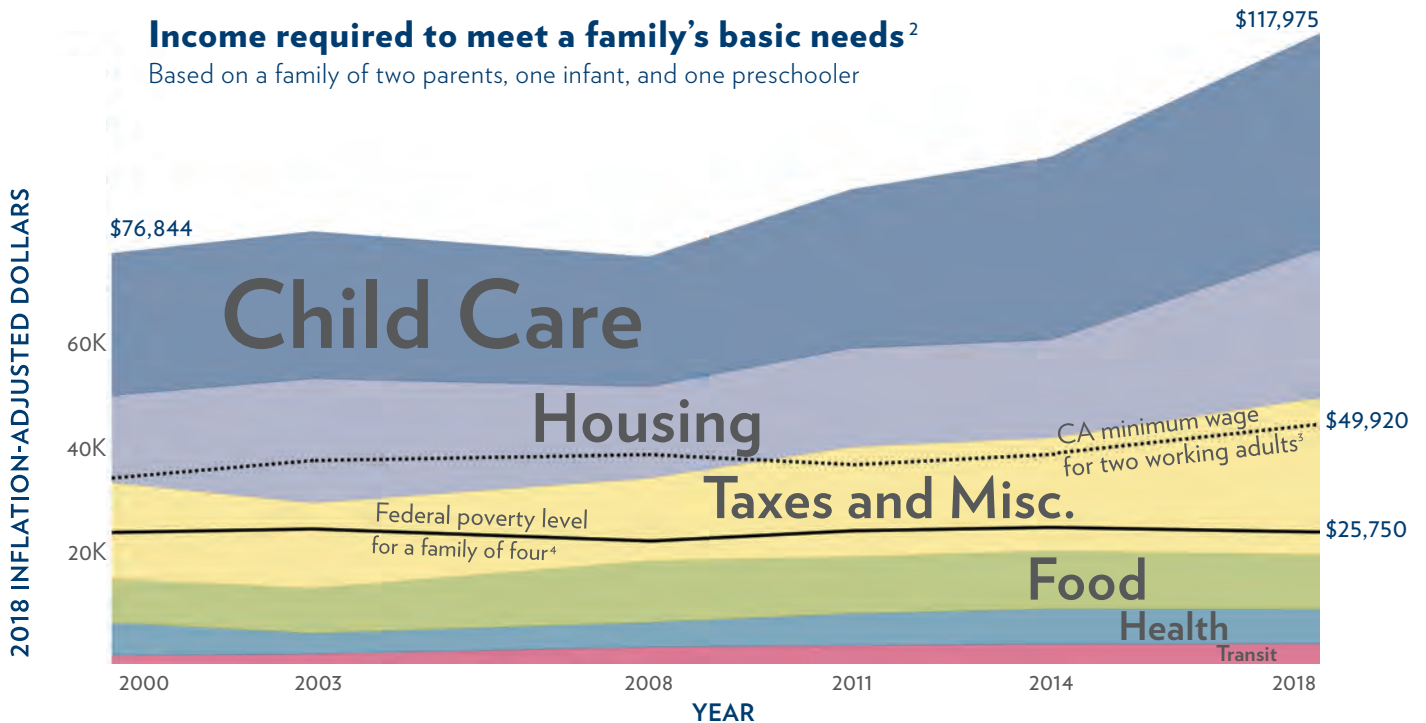


Families are in economic distress and struggling to meet basic needs.

Children who are healthy, food secure, and well-rested have significantly higher levels of academic achievement.¹ By addressing families' basic needs, we can help young children develop to their full potential and succeed later in school and career.

Income required to meet a family's basic needs²

Based on a family of two parents, one infant, and one preschooler



Population of Alameda County: 1,629,615

Population of 0-5 in Alameda County: 116,890

- More than **3,070** families in Alameda County live at or below the poverty level.⁵
- **13%** of children under 5 years live below poverty level.⁶
- Households by race that fall below the Self-Sufficiency Standard:²
 - African American—**53%**
 - Asian/Pacific Islander—**28%**
 - Latinx—**51%**
 - Native American—**29%**
 - White—**20%**

CHILD CARE COST IS AN INCREASING BURDEN ON FAMILIES²

Full-time cost for one infant



2000
\$12,000
(Inflation adjusted to 2018)

2018
\$21,888

+82%
increase in child care cost 2000-2018

UC Berkeley Tuition⁷ 2019-20
\$14,254

Child care cost has risen far above the cost of state university tuition.

CHILDREN EXPERIENCING HOMELESSNESS⁸

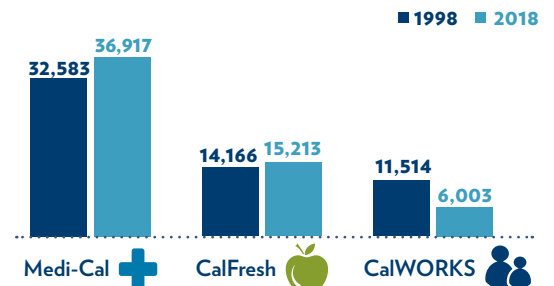


2013-2014
3,477

2016-2017
4,574

+32%
increase in child homelessness in only three years

NUMBER OF CHILDREN 0-6 RECEIVING PUBLIC BENEFITS⁹





OUR WORK IN ALAMEDA COUNTY DISTRICT 4 – SUPERVISOR NATE MILEY

First 5 takes an equity-driven approach to improve the lives of children and their families through place-based efforts, partnerships, and community-driven programming. Our work in District 4 includes:

Corresponding map on next page.

● **Help Me Grow (HMG)**

Our HMG program helps families and providers detect early signs of developmental, social-emotional, and learning concerns before a child enters school. HMG helps families navigate complex systems to receive the necessary supports they need. Between 2014 to 2018 in District 4, more than **3,000 calls and referrals** were made to the HMG phone line.

▲ **Library Partnerships**

We partner with library systems throughout the county to develop story times with play groups that promote kindergarten readiness in underserved communities. In addition, we supply partner libraries with Learning Adventure Backpacks that can be checked out by families throughout the year. Backpacks contain books and materials, in English and Spanish, that build kindergarten readiness skills in four domains: literacy, math, science, and social skills.

◆ **Kindergarten Readiness Assessment**

The Kindergarten Readiness Assessment provides a detailed portrait of the social, emotional, and academic skills possessed by incoming kindergarten students across Alameda County. We have funded Applied Survey Research to administer the assessments since 2008, as well as produce a longitudinal study of kindergarten readiness correlated to third grade achievement. Of the **160 students** that were assessed for kindergarten readiness in the schools in your district in 2017, **32% were “fully ready.”** The county average was 44% of children ready for kindergarten.

Neighborhoods Ready for School (NRFS)

We make NRFS grants to support neighborhood-based and resident-led strategies that promote child and family well-being. NRFS grantees build infrastructure and enhance existing community assets to provide safe places for families to learn, play, grow, and even become employed. The program seeks to increase neighborhood-level coordination of existing services in support of children’s school readiness and community well-being and intentionally promotes family leadership and civic engagement opportunities.

First 5 Alameda County FY 18-19 Contractors and Grantees in District 4

- ① **Roots Community Health Center (\$470,000)**
Nearly 170 people have been served.

Roots offers affordable urgent care and primary care to cities across Alameda County. As part of NRFS, Roots is developing the East Oakland Ready for School Network, a neighborhood network of nonprofits, community members, and organizations in the East Oakland neighborhood to improve health outcomes and school readiness, particularly for African-American families with children ages birth to five. The Network will address food security and housing stability, increase access to primary care and behavioral health care, employment and training opportunities, and living wage jobs, in addition to increasing the capacity of early childhood partners.

- ② **ISEED (\$49,996)**
15 trained to use the Streetwyze App.

Funding to provide training and ongoing technical assistance for the implementation and launch of the Streetwyze App for Roots Community Health Center (Roots), and analyze data on community assets, barriers, and gaps in the local early childhood readiness infrastructure, as well as provide, as appropriate, policy implications and recommendations or next steps.

- ③ **Youth UpRising/Room to Bloom (\$173,600)**
Nearly 400 primary caregivers have been served.

1. Funding to provide case management for Castlemont Community families (East Oakland), focused specifically on assisting families with applying and/or accessing Alameda County Social Services Administration via Entitlement Services, and assistance for other programs and services.

2. Funding to provide culture keeping (e.g., security), janitorial services, and facilities management to support the Room to Bloom Family Resource Center on the Youth UpRising campus and daily early childhood programming taking place in their facility.

- ④ **Child Care Links (\$230,000)**

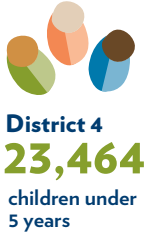
500 providers served with TA coaching, training and TA; 40 of these providers are Family, Friend and Neighbor caregivers.

1. Funding to provide professional development opportunities for the Early Childhood Education (ECE) workforce in Alameda County and on-site technical assistance and coaching to Quality Rating and Improvement System (QRIS) sites.

2. Funding to provide coordinated training for family, friend, and neighbor caregivers and individual training for alternative payment family child care providers who care for children birth to 5 years old in Alameda County.

Total District 4 Population: 359,962¹⁰

Families in poverty in District 4⁵



1.4%
of the total Alameda County population

6.5%
of the total District 4 population

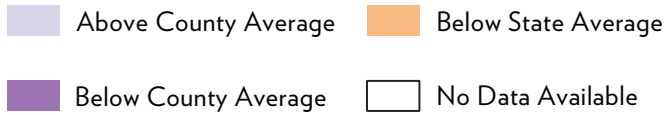


10.4%
of families with children under age 5 living below the poverty level



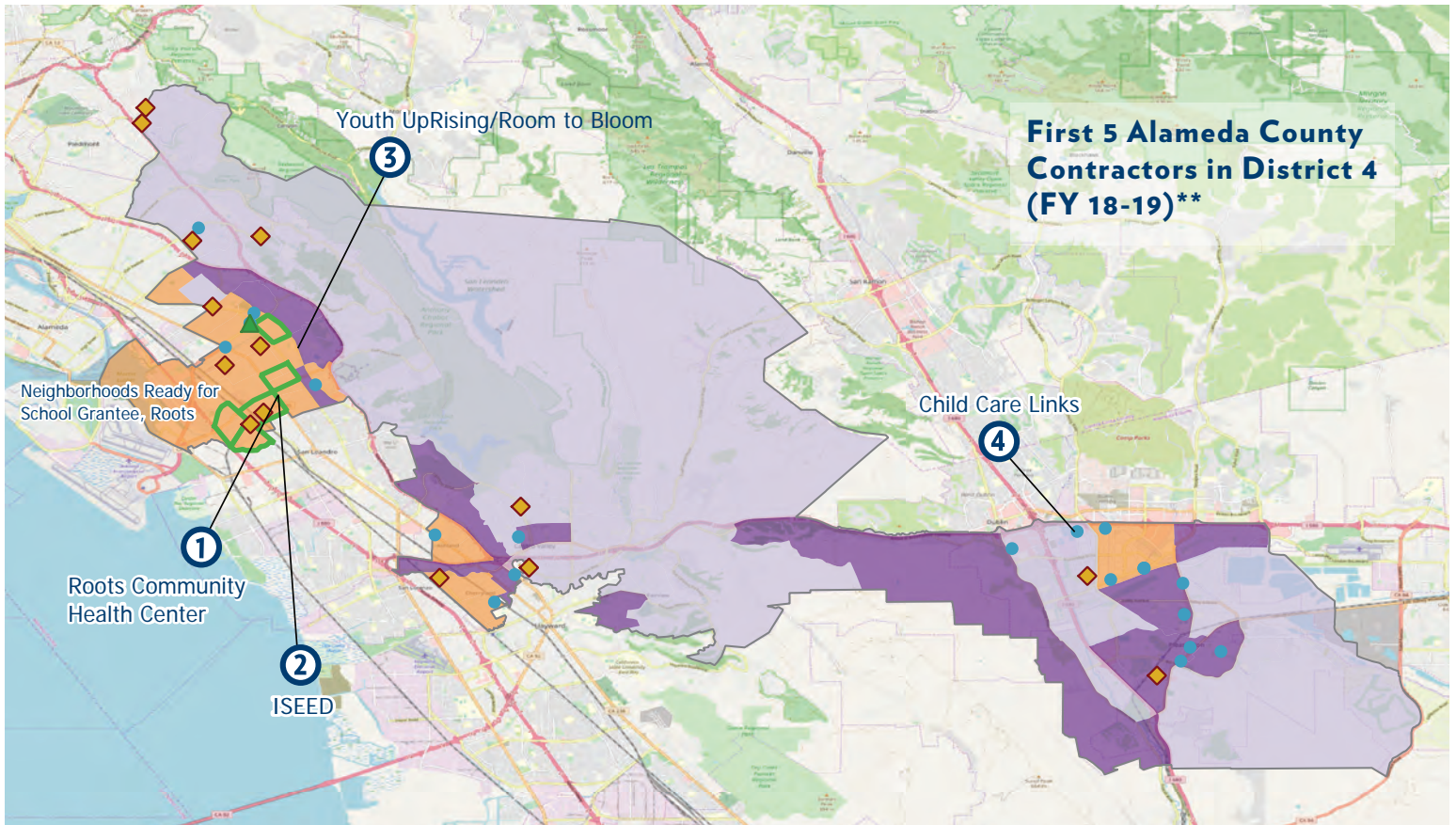
846
families with children under age 5 living below the poverty level

2016 Strong Start Index Score*



Legend

- Help Me Grow provider (2013-2019)
- Library partner
- Participating 2017 Kindergarten Readiness Assessment school



*The California Strong Start Index is a measure of the resources available to a child at birth, defined as 12 indicators across four domains: family, health, service, and financial. Individual “Strong Start scores” are calculated by counting the number of indicators, or assets, present on a birth record (0-12). The greater the number of assets, the stronger the score. The average Strong Start score across all 2016 birth records in California is 8.8 out of 12. The average Strong Start score across all 2016 birth records in Alameda County is slightly higher at 9.4 out of 12. For more information, visit www.strongstartindex.org.

** NOTE: Many contractors provide services across neighborhoods, cities, and district boundaries. Billing addresses have been used for mapping purposes

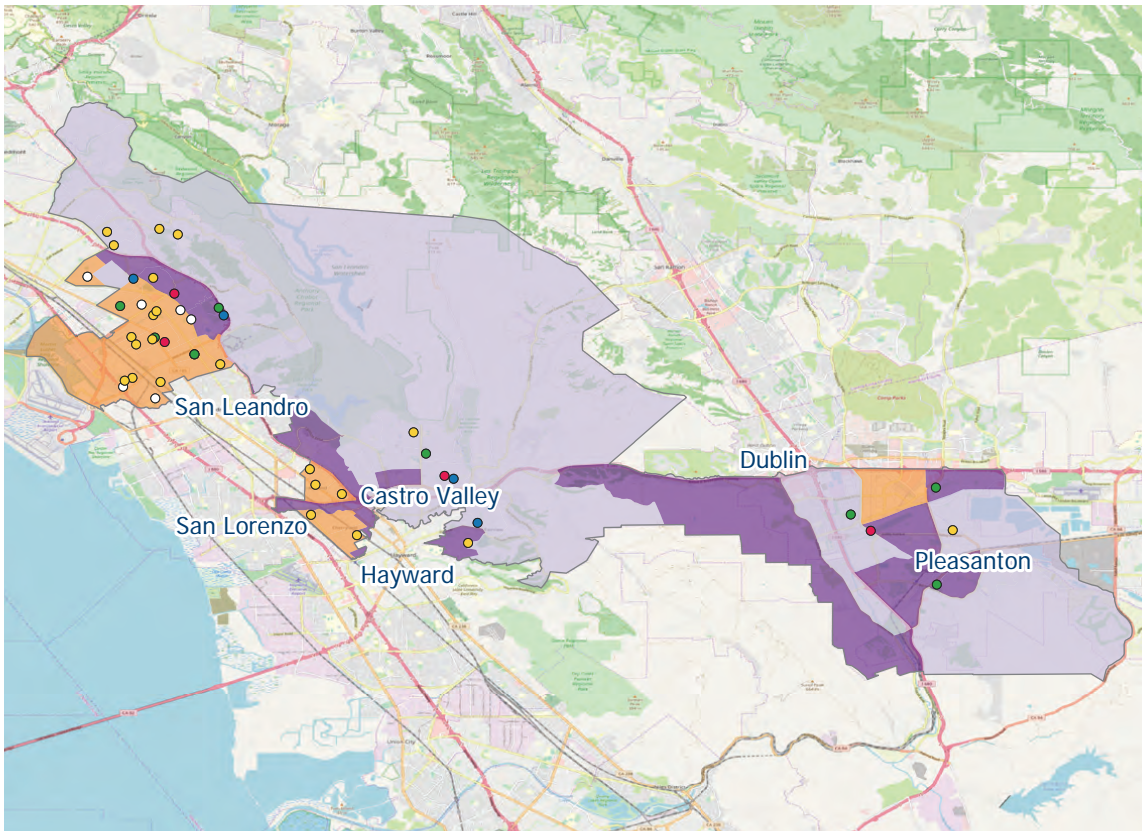
We invest in quality early care and education to build the capacity of providers and child care sites through rating, coaching, and professional development to improve the quality of early childhood education programs. Sites are rated through our Quality Counts program and those ratings can be accessed by families.

District 4 child care sites participating in First 5’s Quality Counts program.



14
family child care

31
center-based care



Legend

2016 Strong Start Index Score

- Above County Average
- Below County Average
- Below State Average
- No Data Available

FY 2018-2019 Quality Counts rating (5 = highest quality)

- Rating: 5
- Rating: 4
- Rating: 3
- Rating: 1 or 2
- No Rating

*This information includes Step 2 and Step 3 sites, some of which have not received a rating; Center-Based Care and Family Child Care Sites that are, or will be rated; sites that closed or dropped from Quality Counts at some point during the report year; and sites that dropped prior to the reporting year, but whose rating is still valid.

1. Ickovics, J. R., Carroll-Scott, A., Peters, S. M., Schwartz, M., Gilstad-Hayden, K., & McCaslin, C. (2014). Health and Academic Achievement: Cumulative Effects of Health Assets on Standardized Test Scores Among Urban Youth in the United States. *Journal of School Health, 84*(1), 40-48. doi: 10.1111/josh.12117. Federal poverty level is based on a family of four. California minimum wage shown is for two working adults.
2. Insight Center. Family Needs Calculator (formerly the Self-Sufficiency Standard). Retrieved from <https://insightcced.org/2018-family-needs-calculator/>
3. Department of Industrial Relations. Minimum Wage (income of two full-time working adults at California minimum wage, as of January 1, 2019). Retrieved from https://www.dir.ca.gov/dlse/FAQ_MinimumWage.htm
4. US Department of Health & Human Services. US Federal Poverty Guidelines Used to Determine Financial Eligibility for Certain Federal Programs. Retrieved from <https://aspe.hhs.gov/poverty-guidelines>
5. U.S. Census Bureau, 2013-2017 American Community Survey 5-Year Estimates, Table S1702 (“Poverty Status in the Past 12 Months of Families”)
6. United States Census Bureau. 2016 American Community Survey 1-year Estimates. Retrieved from <https://www.census.gov/programs-surveys/acs/technical-documentation/table-and-geography-changes/2016/1-year.html>
7. University of California, Berkeley. Cost of Attendance. Retrieved from <https://financialaid.berkeley.edu/cost-attendance>
8. Report to Alameda County Office of Education on McKinney-Vento Needs by HTA.
9. Alameda County Social Services Agency
10. United States Census Bureau. 2013-2017 American Community Survey 5-year Estimates. Retrieved from <https://www.census.gov/programs-surveys/acs/technical-documentation/table-and-geography-changes/2017/5-year.html>. 322,388 estimate of population for whom poverty status is determined.