

Child and Family Data for Action — Alameda County District 2, Supervisor Richard Valle



District 2 Family Demographics

{ TOTAL POPULATION (2019): **335,929** }



BABIES BORN (2017):

4,212



CHILDREN UNDER AGE 6 (2021):

24,121

7.2% of D2's total population

HOUSEHOLDS WITH CHILDREN UNDER AGE 6 (2019):

15,139



Families with Children Accessing Public Benefits in District 2¹

Children 0-6 (number and percent of total) Enrolled 2021



Medi-Cal

12,088 (~50%)



CalFresh

3,341 (~27%)

Kindergarten Readiness in District 4

Of the nearly **346 students** that were assessed for kindergarten readiness in the schools in District 2 in 2019, **40%** were “fully ready.” The county average was **44%** of children ready for kindergarten. See more about kindergarten readiness in District 2 on page 4.



Community Resilience Fund, Board of Supervisor Grantees

Grantees chosen by the Alameda County Board of Supervisors provided concrete supports to families with children from birth to age five who are from historically underserved communities and disproportionately affected by the COVID-19 pandemic due to structural racism and classism.

District 2 Grantees:

- Union City Family Center (\$50,000)
- South Hayward Parish (\$50,000)

Child Care Providers in District 2

341 total providers, including **60 Quality Counts** (QC) sites

9,113 total children served, including **1,650 children** birth to age five served in QC sites



71 centers, including **27 centers** in QC



288 family child care (FCC) providers, including **25 FCCs** in QC

6 friend and family caregivers in QC



About First 5's Work in Alameda County District 2

First 5 takes an equity-driven approach to improve the lives of children and their families through place-based efforts, partnerships, and community-driven programming. Our work includes:

People Served FY 2019–2020

In District 2	Countywide Total
3,926 children and caregivers served	39,850
516 providers served	7,752

Essential Supplies Distributed by First 5 and Partners in District 2



758,400 diapers



2,097 liters of hand sanitizer



3,088 books



1,752,200 baby wipes



77,650 masks



2,304 coloring books and crayons



35,800 gloves



1,540 feminine hygiene products

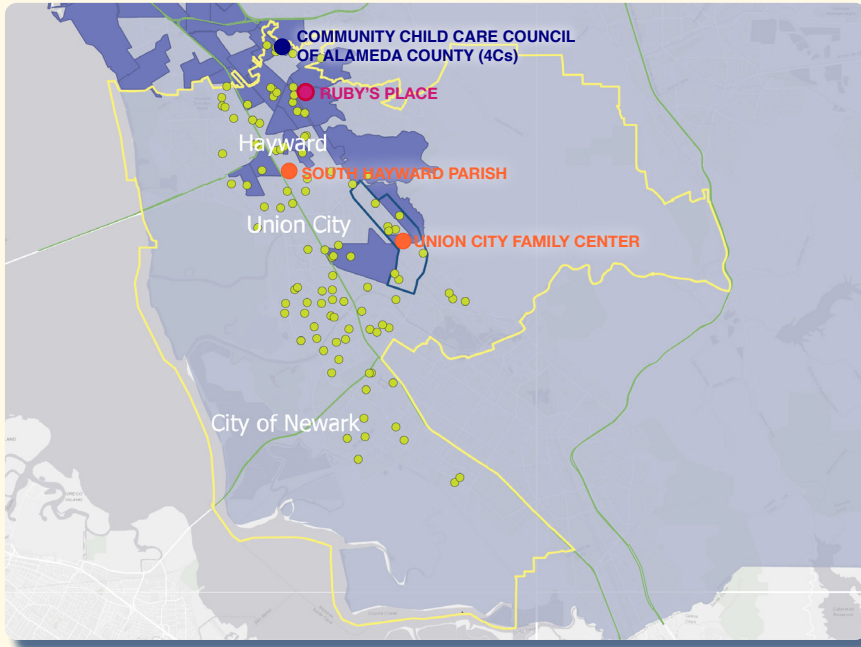


108 air purifiers for 216 child care providers

¹Estimates of children enrolled in SSA programs derived from approximating the overlap of zip codes into supervisor districts and dividing counts by proportion of zip code within district.

Responding to Community Need During the COVID-19 Pandemic

Through the [First 5 Community Resilience Fund](#), established in April 2020, we administered more than \$10 million throughout Alameda County to help children, families, and caregivers cope with the heightened challenges of the COVID-19 pandemic. Through Community Resilience Fund investments in school districts, grants to community-based organizations, family child care providers, and countywide supplies and concrete supports, **First 5 has invested \$1,748,5799 in District 2.**



Legend

- Areas of High Child Poverty (0-5) & High COVID-19
- District 2 Boundaries
- Neighborhoods Ready for School Service Area
- Community Child Care Council of Alameda County (4Cs)
- Board of Supervisor Grantees
- Ruby's Place
- Family Child Care Grantees
- Freeways

□ **Neighborhoods Ready for School**

In addition to the pre-COVID activities below, Neighborhoods Ready for School sites pivoted during the COVID-19 pandemic to become **distribution hubs for essential supplies, such as diapers/wipes, baby formula, face masks, hand soap, dental health items, and more.**

- **Union City Family Center (\$940,776 in FY 2019-21 and \$100,000 from the Community Resilience Fund):** Build neighborhood infrastructure to provide places for families to learn, play, and achieve their goals; increase neighborhood-level coordination to provide a comprehensive menu of resources to support family protective factors, build community, and increase children's school readiness; and increase family leadership and civic engagement opportunities.

● **Community Child Care Council (4Cs) of Alameda County (\$395,557)***

As part of Alameda County's COVID-19 relief efforts, provide training, technical assistance, and coaching opportunities to the Early Childhood Education (ECE) workforce (\$140,000) and provide resources, coaching, referrals, incentives, materials, and other forms of remote assistance, **including essential supplies, such as diapers/wipes, face mask, and cleaning products**, to child care providers, family, friend, and neighbor caregivers, and families with children from birth to age 5 (\$255,557).

*Total First 5 investment = \$915,557. Additional work by 4Cs serving District 2 shown on page 3.

● **Board of Supervisor Grantees**

- **South Hayward Parish (\$50,000):** Essential supplies, such as hand sanitizer, diapers/wipes, formula, face masks. Technology and educational materials, such as laptops, to families with children 0-5 who use the food pantry and attend local schools. Technical infrastructure to support project operations.
- **Union City Family Center (\$50,000):** Augmented First 5's existing Neighborhoods Ready for School grant (additional to funds shown at left) in support of essential supplies and concrete supports for families.

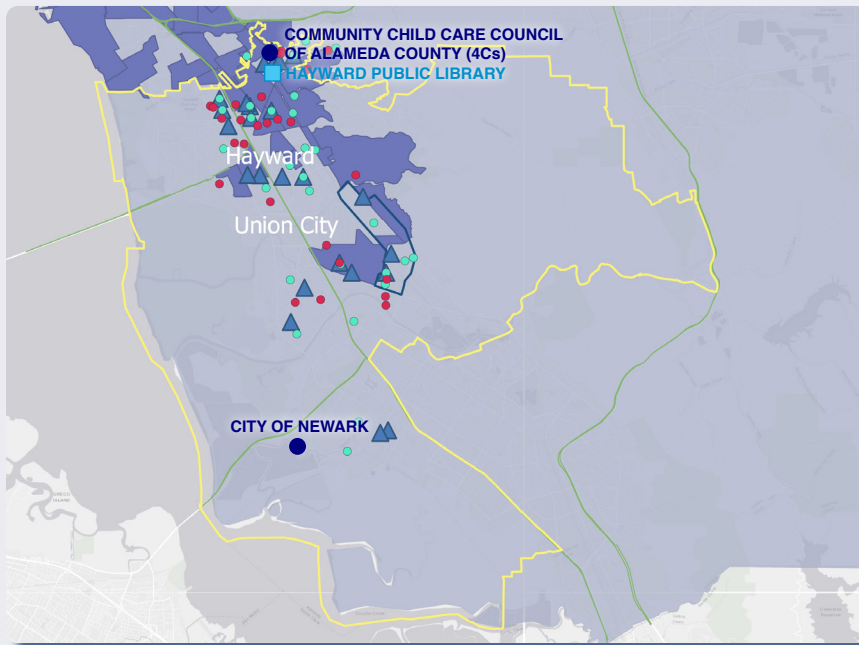
● **Ruby's Place (\$9,000)**

Support for families in accessing concrete needs (e.g., food, diapers/wipes, rental assistance) and essential supports, such as family navigation and linkage to services. Additionally, direct stipends to families with young children to access essential supplies.

● **Family Child Care Grantees (\$506,400)**

Through funding provided by Alameda County Social Services Agency from the CARES Act, First 5 administered \$4,000,000 to support essential supplies for child care professionals (\$3,000,000) and grants to family child care (FCC) providers (\$1,000,000). **In District 2, 108 FCC providers received stipends averaging \$4,688 per site.**

First 5 Programs in District 2



Legend

- Areas of High Child Poverty (0-5) & High COVID-19
- District 2 Boundaries
- Help Me Grow Referring Providers
- Early Learning Communities Network Grantee
- Hayward Public Library
- Quality Counts Sites**
- Center-Based Care
- Family Child Care
- Freeways

▲ **Help Me Grow Referring Providers**

Help Me Grow (HMG) assists families and providers with detecting early signs of developmental, social-emotional, and learning concerns before a child enters school. HMG also helps families navigate complex systems to access necessary supports. **Between 2016 and March 2021 in District 2, more than 2,334 child-specific referrals were made to the HMG phone line.**

● **4Cs of Alameda County (\$520,000)***

- **\$340,000 for early care and education (ECE).** Provide professional development opportunities for the early care and education workforce, including on-site technical assistance and coaching to Quality Rating and Improvement System (QRIS) sites (\$260,000). Provide trainings and playgroups for family child care providers and family, friend, and neighbor caregivers (\$80,000).
- **\$180,000 for Early Learning Communities Network Grant.** Funding to implement a comprehensive Early Learning Action Plan (ELAP) for the City of Hayward and purchase a vehicle in support of the Early Learning Mobile Unit, part of ELAP implementation.

*Total First 5 investment = \$915,557. Additional work by 4Cs serving District 2 shown on page 2.

● **City of Newark (\$135,000)**

Funding to implement a comprehensive Early Learning Action Plan, including support with implementation of a promotora program for Latina mothers and implementing the Abriendo Puertas parent engagement and leadership program.

■ **Hayward Public Library**

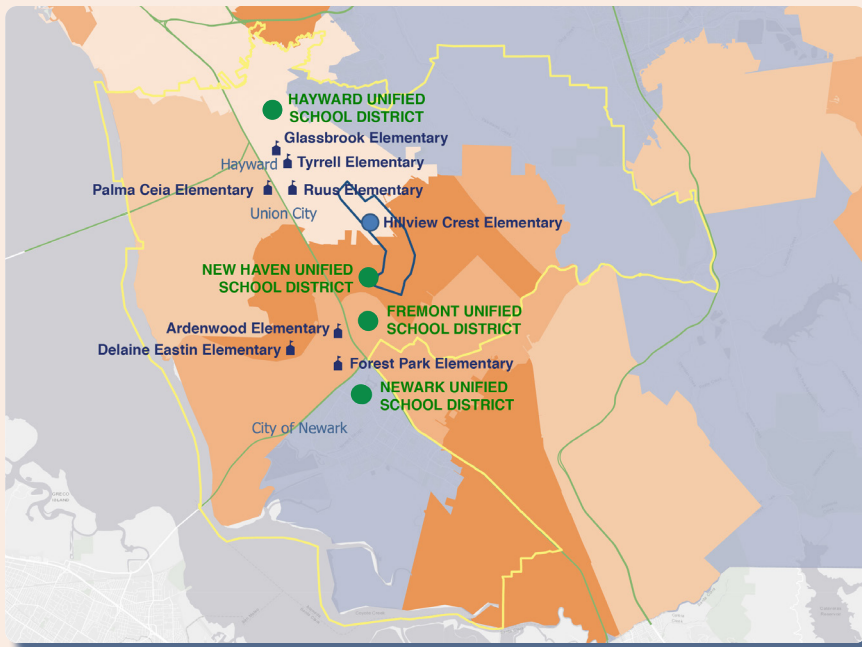
Funding to provide Quality Counts resources for family, friend, and neighbor caregivers by leveraging storytimes (\$12,900). Additional funds to support purchase of bi- and multilingual children's books (\$4,900).

● **Quality Counts Sites**

Build capacity and improve the quality of early childhood education programs through rating, coaching, and professional development. Sites receive ratings that are accessible by families.

Kindergarten Readiness in District 2

The Kindergarten Readiness Assessment provides a detailed portrait of the social, emotional, and academic skills possessed by incoming kindergarten students across Alameda County. We have funded Applied Survey Research to administer the assessments since 2008, as well as produce a longitudinal study of kindergarten readiness correlated to third grade achievement. **We find differences in kindergarten readiness are largely attributable to inequities in access to resources.** The greatest moveable factor continues to be child health and well-being, which is tied to socioeconomics, housing stability, and stress among parents/caregivers. These factors, due to structural racism, disproportionately impact families of color.



Legend

Kindergarten Readiness Zip Codes

- Lowest 25%
- 25% to 50%
- 50% to 75%
- 75% to 100%

District 2 Boundaries

🏠 Participating Schools in 2019 Kindergarten Readiness Assessment

● Community Resilience Fund Kindergarten Transition Grants/Stipend

Freeways

🏠 Participating Schools in 2019 Kindergarten Readiness Assessment

SCHOOL	CLASSROOMS	CHILDREN ASSESSED	PARENT SURVEYS RETURNED
Ardenwood	1	17	13
Delaine Eastin	3	57	49
Forest Park	2	44	38
Glassbrook	2	42	19
Hillview Crest	1	46	12
Palma Ceia	2	51	31
Ruus	1	21	21
Tyrrell	3	68	54
TOTAL	15	346	237

● Kindergarten Transition Grants/Stipends

Based on findings from the 2019 KRA that highlighted the **importance of transition activities at schools for improving children's kindergarten readiness**, First 5 funded school districts to provide services and supplies in support of kindergarten transition programming. Funding amounts were determined using an **equity index** to target resources in historically underserved communities that have been disproportionately impacted by the COVID-19 pandemic due to structural racism and classism.

1. **Fremont Unified School District (\$73,151)**
2. **Hayward Unified School District (\$357,330)**
3. **New Haven Unified School District (\$150,596)**
4. **Newark Unified School District (\$132,912)**