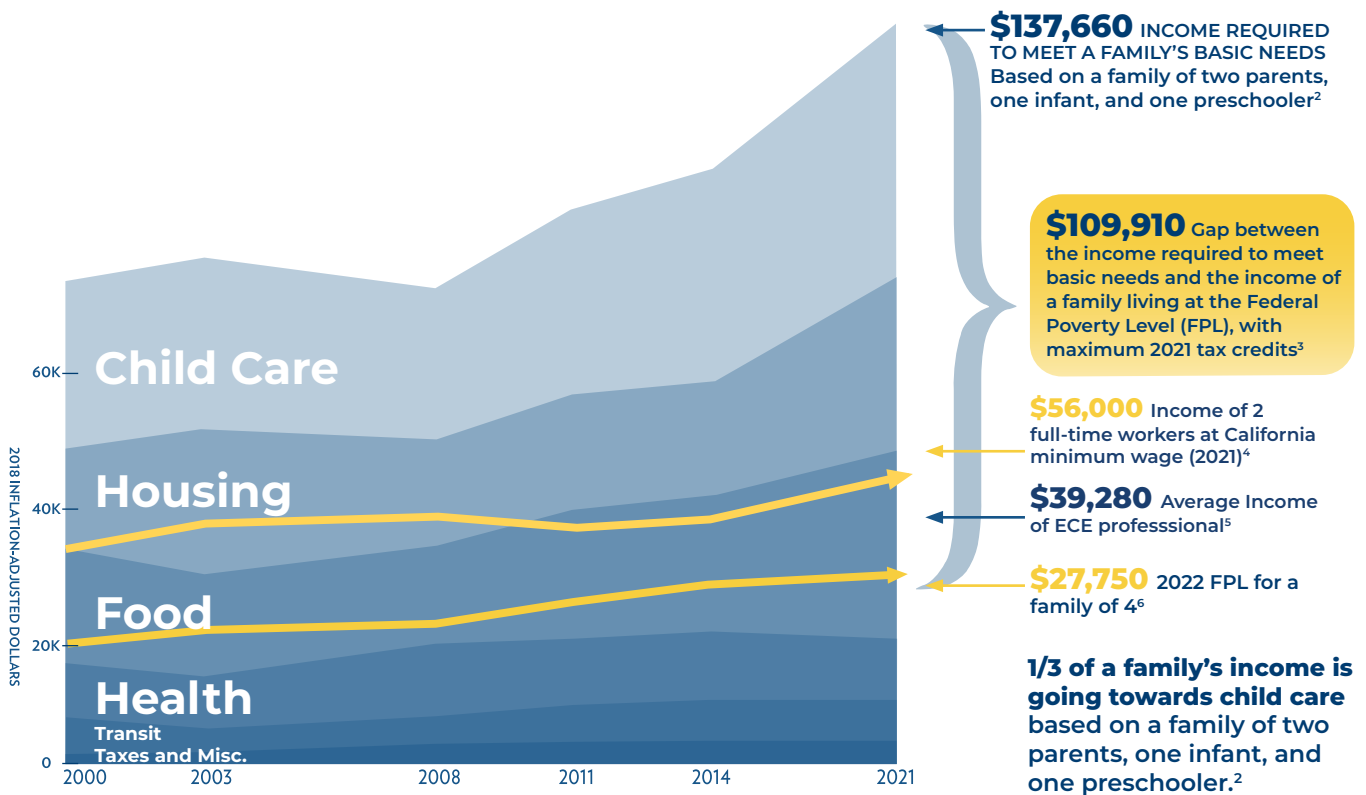




Child & Family Data for Action: Alameda County Supervisorial District 3

FINANCIAL REALITIES FOR FAMILIES IN ALAMEDA COUNTY¹



STRUCTURAL INEQUITIES LEAD TO RACIAL DISPARITIES

Maternal & Newborn Health



Black women and birthing people are 3x more likely to die during pregnancy or childbirth and to experience more maternal health complications.⁷



Black babies are 3-4x more likely to be born too early, too small, or to die before their first birthday.⁷



Black women and families are 2x more likely to live in or experience poverty during pregnancy.⁷



1 in 3 families struggled to afford diapers prior to the pandemic.¹⁰

DISTRICT 3 FAMILY DEMOGRAPHICS*

District 3 Estimated Total Population: 331,010²

19.8% of Alameda County's population of 1,648,556

1,062

families living under the poverty level, 11.8% of the 9,012 families with children under 5 in the district⁹

2,352

children under 5 living in poverty, 17.3% of the estimated 13,633 children under 5 in the district⁸

3,536

babies born to mothers who reside in the district, 1.1% of the district total population¹²

Families Accessing Public Benefits in District 3 (children 0-6)

These are estimates due to the change in district boundaries and using zip code approximation.

9,200

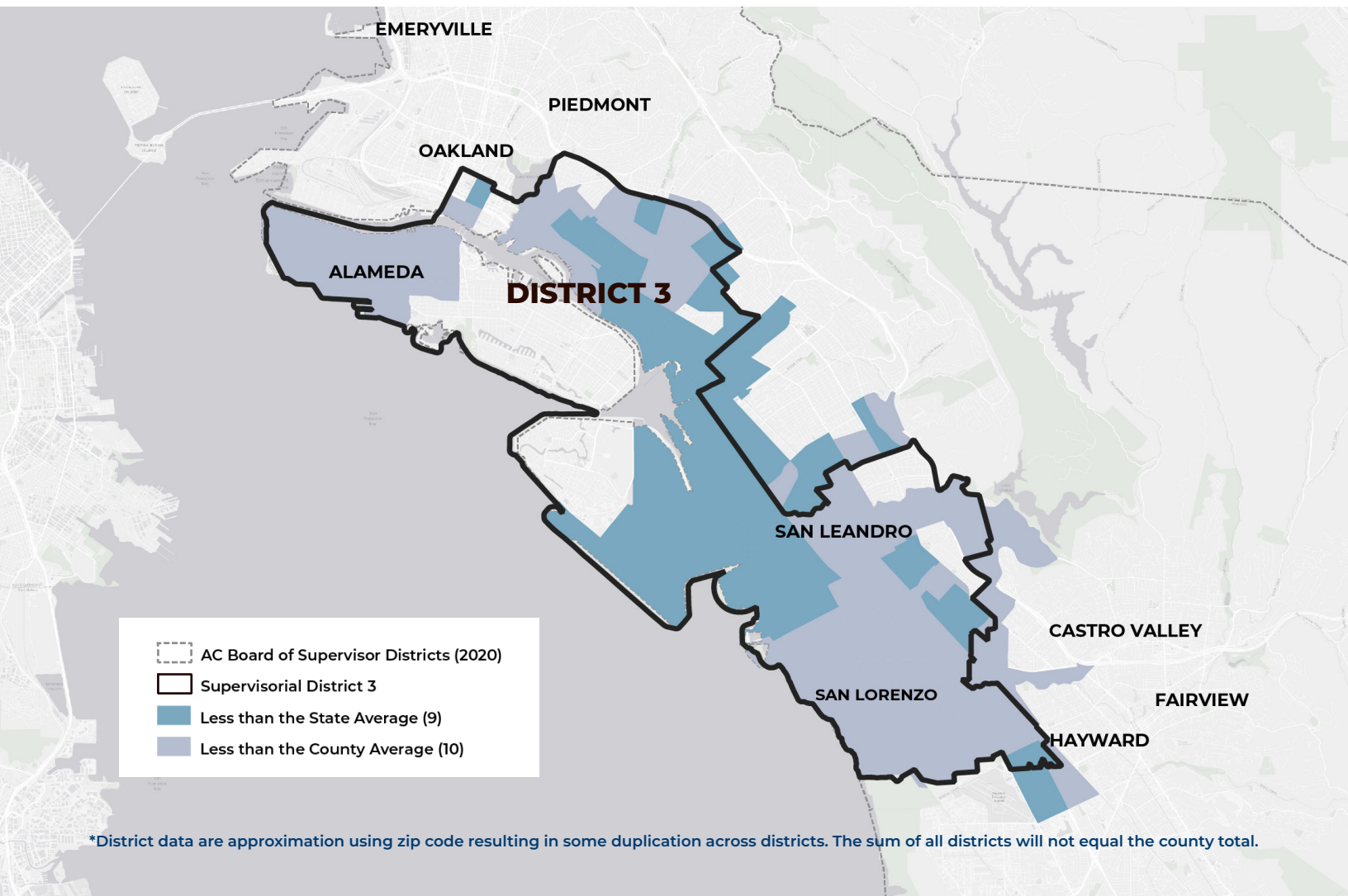
of 0-6 population, about 40.5%, receiving Medi-Cal¹⁵

3,596

of 0-6 population, about 15.8%, receiving CalFresh¹⁵

Link Between Child Well-Being & Community Conditions: Strong Start Index Map 2020¹⁷

Research has found correlations between the prevalence in the number of community assets, e.g., family, health, service, and financial assets, to school readiness and life-long well-being. Alameda County has 10 Strong Start Index assets out of a possible 12, which exceeds the state average for 9 assets. Supervisorial District 3 has an average of 9.5 assets.

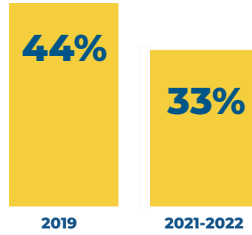


*District data are approximation using zip code resulting in some duplication across districts. The sum of all districts will not equal the county total.

ALAMEDA COUNTY KINDERGARTEN READINESS

Kindergarten Readiness in 2021-2022¹⁸

According to parents/caregivers, 33% of children were fully ready for kindergarten compared to 44% in 2019. **Structural inequities compounded by the COVID-19 pandemic have impacted children, families, and communities.**

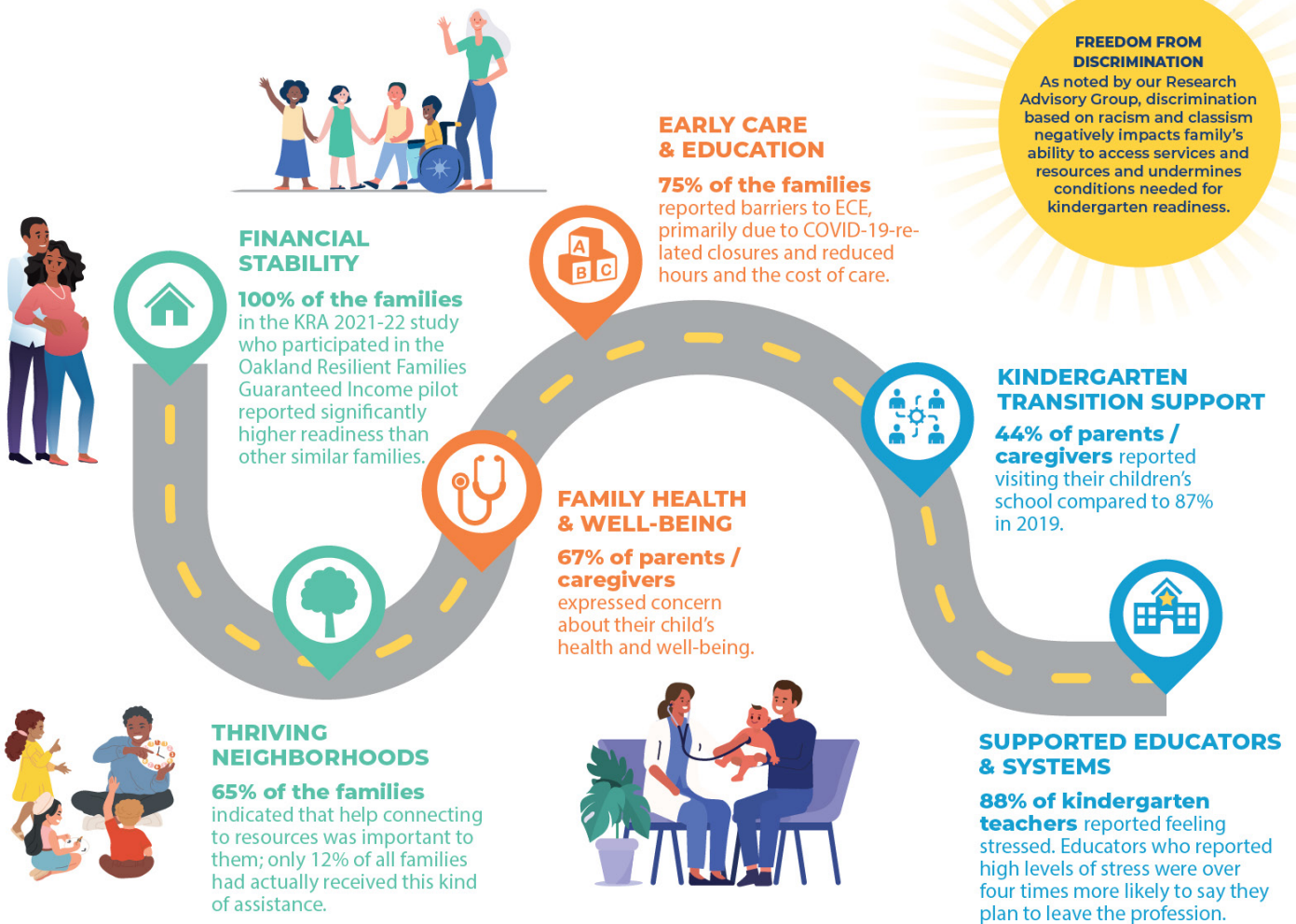


Achievement gaps persist for children who are not ready for kindergarten.

4 in 5

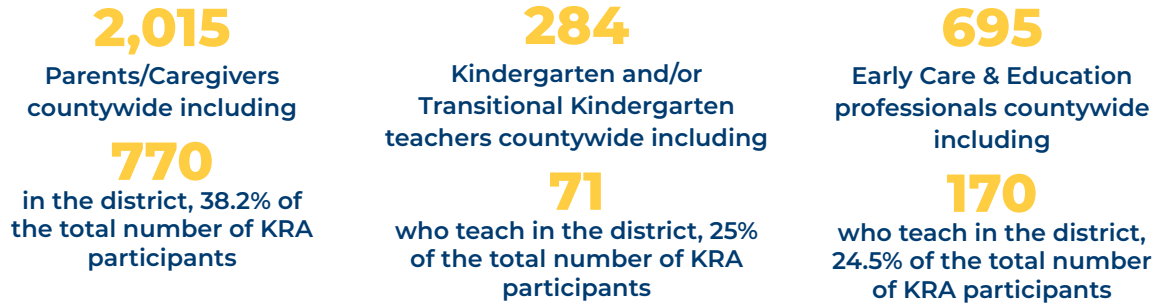
children who are not ready for kindergarten continue to struggle academically in third grade (2018)¹⁹

Road to Kindergarten Readiness



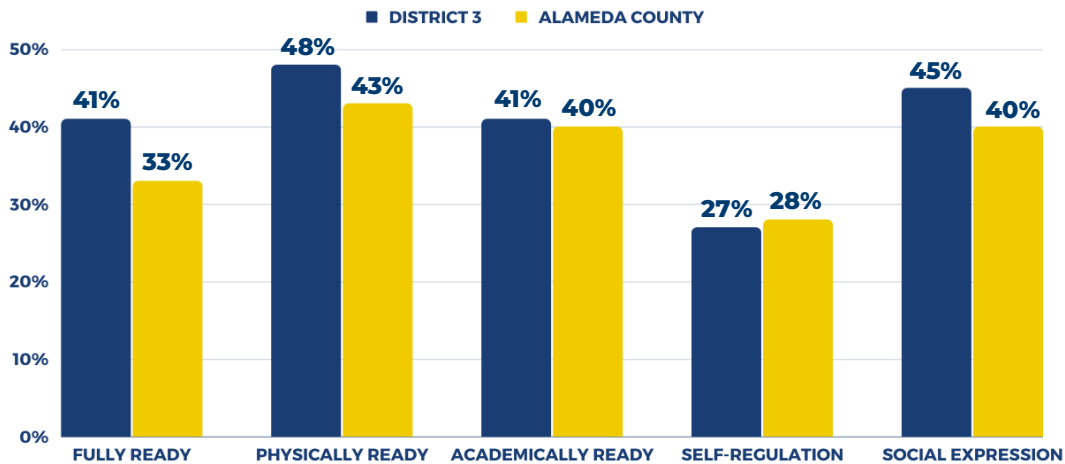
Community, Family, and School conditions affecting kindergarten readiness were determined through analysis of 3,000+ surveys and the input of a 30-member Research Advisory Group comprising parents/caregivers, early care and education professionals, transitional/kindergarten teachers, and community leaders. Learn more about the study sample and methodology in Appendix D of the [2021 Kindergarten Readiness Assessment](#).

District 3: KRA Community Engagement



District 3: Kindergarten Readiness in 2021-22

Parent/Caregivers' Assessment of Their Child's Readiness by Domain



DISTRICT 3 EARLY CARE & EDUCATION (ECE)

Access to Child Care²⁰

Preschool & infant toddler unmet need for subsidized care:

5,810 Infant/toddler Aged

4,657 Preschool-Aged

Change in the net number of centers & family child care (FCCs) between 2019 & 2021.²⁰

-5 decrease in centers in cities within the district

-103 decrease in licensed FCCs in cities within the district

2022 Facilities Needs Assessment²¹

83 of sites First 5 Alameda spoke to about facilities issues (33 centers, 50 licensed FCCs)

33% of sites reported 6+ conditions as inadequate or substandard

31% of sites reported they would expand if resources were available

Child Care Providers & Libraries²²

85 sites enrolled in the Quality Counts program (44 centers, 16 licensed FCCs, 20 Family, Friends & Neighbor providers & 5 libraries)

1,887 children under the age of 5 served at these sites

350 ECE professionals work at these sites

FIRST 5 PROGRAMS FY 2021-2022

District 3: Help Me Grow²²

2,476

children & their families were served in the district, providing them with care coordination, developmental screening, health & parenting education, resource information, family navigation, & peer support.

1,514

child-serving agencies in the district were provided with support regarding care access, developmental screening, and/or assistance in navigating children to services.

118

referrals received to assist children & families from the district.

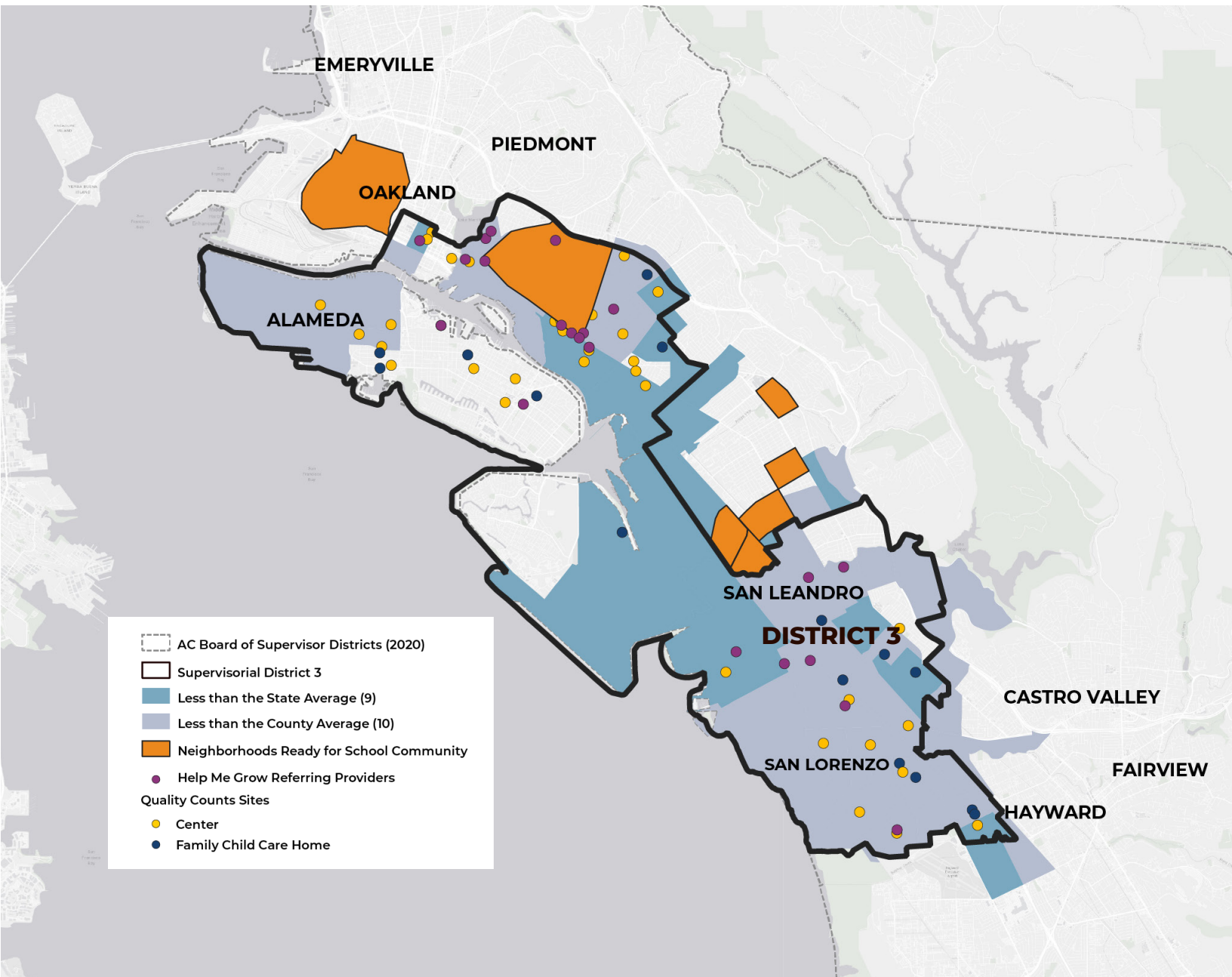
Alameda County: Training at F5 (Online & In-Person)

46 training events hosted

1,005 people attended at least one training

550 agencies/organizations participated

Strong Start Index Map 2020¹⁷ & First 5 Programs FY 2021-2022



FIRST 5 ALAMEDA COUNTY INVESTMENTS

\$4.1 MILLION TOTAL INVESTED IN DISTRICT 3 IN FY 2022-23



FINANCIAL STABILITY

Lotus Bloom

\$50,000 in FY 2021-2022; \$50,000 in FY 2022-2023

Funding to distribute basic needs services to families with children 0-5 in Alameda County through the Oakland Family Resource Center Network.

SupplyBank.org

\$51,811 in FY 2021-2022; \$460,000 in FY 2022-2023

Funding to provide Kindergarten Readiness backpacks. Funding to provide diaper kits to organizations serving high need families with young children in Alameda County (FY 2022-2023 only).



THRIVING NEIGHBORHOODS

San Antonio Family Resource Center (ALL IN Alameda County, Lotus Bloom, Trybe)

\$423,000 in FY 2021-2022; \$426,000 in FY 2022-2023

Funding to build infrastructure in neighborhoods to provide places for families to learn, plan, and achieve their goals; increase neighborhood-level coordination to provide a comprehensive menu of resources to support family protective factors, build community, and increase children's school readiness; and increase family leadership and civic engagement opportunities. In FY 2022-23 only, an additional \$3,000 in funding supported language access services formerly covered through First 5's in-house Cultural Access Services (CAS).

Lao Family Community Development, Inc

\$10,000 in FY 2021-2022

Funding to provide supports for Afghan refugee families.



FAMILY HEALTH & WELL-BEING

Alameda County Public Health Department

\$95,000 in FY 2021-2022; \$95,000 in FY 2022-2023

Funding to provide training, technical assistance, and consultation support to Child Health and Disability Prevention (CHDP) and other pediatric practices serving families with the most need in Alameda County on early identification for children birth-5 years of age with health and developmental needs.

Family Resource Navigators

\$482,000 in FY 2021-2022; \$482,000 in FY 2022-2023

Funding to provide Help Me Grow Family Navigation services, support coordination and administration of Help Me Grow family leadership activities and help meet the essential needs of vulnerable families.

Alameda Health System - Highland Hospital

\$156,028 in FY 2021-2022; \$136,800 in FY 2022-2023

Funding to continue implementation of the DUCLE model, including the support and guidance of the Clinic Champion Pediatrician at Highland Hospital's Pediatric Department.

Funding to implement, sustain, and evaluate a pediatric quality improvement project that builds pediatric primary care capacity to conduct universal developmental and/or trauma screenings and to connect families to relevant resources, all to support early childhood development and promote the learning readiness of young children such that they enter school ready to learn (FY 2021-2022 only).

Community Clinics

Funding to implement, sustain, and evaluate a pediatric quality improvement project that builds pediatric primary care capacity to conduct universal developmental and/or trauma screening and to connect families to relevant resources.

- La Clínica de La Raza - \$14,400 in FY 2021–2022 (3 sites)
- Native American Health Center - \$4,800 in FY 2021 – 202

Supporting Fathers Through Fatherhood Partnership Grants

Funding to enhance capacity for increasing engagement and support of fathers/father figures by hosting father-specific parenting education and support groups, providing staff training and professional development, and integrating activities with First 5 and other family service programs.

The following groups received \$10,000 in FY 2021-2022; \$15,000 in FY 2022-2023:

- Friends of the Oakland Public Library
- Family Paths



EARLY CARE & EDUCATION

BANANAS, Hively, and Community Child Care Council (4Cs) of Alameda County

Overall funding for three agencies: \$240,000 in FY 2021-2022; \$240,000 in FY 2022-2023

Funding to provide training and playgroups for Family, Friend, and Neighbor (FFN) caregivers and Family Child Care (FCC) providers.

Overall funding for three agencies: \$641,00 in FY 2021-2022; \$630,000 in FY 2022-2023

Funding to provide professional development opportunities for the Early Childhood Education (ECE) workforce in Alameda County and on-site technical assistance and coaching to Quality Counts sites.

Jewish Family & Community Services East Bay

\$110,000 in FY 2021-2022

Funding to provide Center for Social Emotional Foundations for Early Learning (CSEFEL) training and coaching to identified Quality, Rating, and Improvement Systems (QRIS) Early Childhood Education sites in Alameda County, mentoring to Alameda County CSEFEL authorized trainers and coaches, and overall administrative oversight for CSEFEL implementation.

San Leandro Public Library

\$9,600 in FY 2021-2022; \$16,400 in FY 2022-2023

Funding to provide Quality Counts Pathway resources for Family, Friend and Neighbor (FFN) caregivers by leveraging San Leandro Library's current Storytimes and support for multilingual programming and materials through Día de los Libros/Día de los Niños (Día) events.

Alameda Free Library

\$7,000 in FY 2021-2022

Funding to provide Quality Counts Pathway resources for Family, Friend, and Neighbor caregivers by leveraging Alameda Free Library's Storytimes.

YMCA of the East Bay

\$502,800 in FY 2021-2022; \$538,000 in FY 2022-2023

Funding to train CalWORKs participants to become certified and employed as early childhood professionals.

California School-Age Consortium (CalsAC) (AB212)

\$582,000 in FY 2021-2022; \$684,765 in FY 2022-2023

Funding to manage the Quality Counts process for distributing Quality Improvement grant incentives and professional development stipends and Dual Language Learner (DLL) stipends. Funds support facility and environment improvements, enhance training and staff release time, support technology needs, and support professional development activities.

BANANAS

\$100,000 in FY 2021-2022; \$100,000 in FY 2022-2023

The BANANAS CARE Program provides child care navigation and support to families who are experiencing homelessness.



KINDERGARTEN TRANSITION SUPPORT

Oakland Unified School District - Summer Kinder/TK Bridge Program

\$227,000 in FY 2022-23

Funding to support Summer Pre-K (SPK) programs and provide Early Childhood Education (ECE) and K-12 teachers with professional development and orientation to the SPK model. Funding also supports a Kindergarten Readiness Director to develop and implement year-round school readiness and transition programming including a student passport/snapshot form, and a variety of family/child learning activities.

CITATIONS

1. Insight Center (2021). California Family Needs Calculator (formerly the California Family Economic Self-Sufficiency Standard or Self-Sufficiency Standard), Alameda County. Retrieved from <https://insightccd.org/family-needs-calculator/>
2. Insight Center (2021). Family Needs Indicator - Alameda County Fact Sheet. Retrieved from: <https://insightccd.org/the-cost-of-being-californian-alameda-county-fact-sheet/>
3. Analysis by First 5 Alameda County calculating the difference between Income Required to Meet Basic Needs [see citation 5] – 2022 FPL level for family of 4.
4. California Department of Developmental Services. (2021). Minimum Wage – 2021. Based on two workers working 40 hours per week, 50 weeks per year. Retrieved from <https://www.dds.ca.gov/rc/vendor-provider/minimum-wage/>
5. California Early Care and Education (ECE) Workforce Registry. (October 2020). Note: Self-reported data for 2,348 people registered in the Alameda County Workforce Registry as of October 2020. The Workforce Registry only represents a subset of the ECE workforce as it is a voluntary database. The registry includes an overrepresentation of those working at child care centers and Title 5 programs compared to other child care program types. Registry participants report wages as an hourly gross rate or annual, monthly, or weekly gross salary. Annual wage was calculated by multiplying their self-reported wage and their self-reported number of hours worked by 50 weeks.
6. US Department of Health & Human Services (HHS). (2022). HHS Poverty Guidelines for 2022. Based on a household of four. Retrieved from <https://aspe.hhs.gov/poverty-guidelines>
7. Alameda County Public Health Department. (n.d), Perinatal Equity Initiative webpage. Retrieved from <https://acphd.org/programs-and-services/perinatal-equity-initiative/>
8. Alameda County Public Health Department. (n.d), Perinatal Equity Initiative webpage. Retrieved from <https://acphd.org/programs-and-services/perinatal-equity-initiative/>
9. Alameda County Public Health Department. (n.d), Perinatal Equity Initiative webpage. Retrieved from <https://acphd.org/programs-and-services/perinatal-equity-initiative/>
10. National Diaper Bank Network. (2021) Diaper Need and Its Impact On U.S. Families. Retrieved from <https://nationaldiaperbanknetwork.org/wp-content/uploads/2019/02/Diaper-Need-and-Its-Impact-on-US-Families.pdf>
11. U.S. Census Bureau (2021). Sex by Age American Community Survey 5-year estimates (B01001).
12. California Department of Public Health, Birth Statistical Master Files. (2020). Retrieved from <https://strongstartindex.org>
13. U.S. Census Bureau (2021). Sex by Age. American Community Survey 5-year estimates (B01001).
14. U.S. Census Bureau (2021). Poverty Status in the past 12 months of families. American Community Survey 5-year estimates (S1702).
15. Alameda County Social Services Agency (2021). Data provided at zip code level. Estimations of client counts using proportion of zip code within supervisor district or city limit
16. Alameda County Social Services Agency (2021). Data provided at zip code level. Estimations of client counts using proportion of zip code within supervisor district or city limit
17. "California Strong Start Index." California Strong Start Index. First 5 Center for Child Policy, Accessed July 28, 2023. <https://strongstartindex.org/>.
18. 2022. 2021-2022 Kindergarten Readiness in Alameda County. Applied Survey Research. [http://www.first5alameda.org/files/2021-22 Alameda KRA Report_ FINAL.pdf](http://www.first5alameda.org/files/2021-22%20Alameda%20KRA%20Report_FINAL.pdf)
19. Applied Survey Research. (2018). Kindergarten Readiness and Later Achievement, A Longitudinal Study in Alameda County. Retrieved from <http://www.first5alameda.org/files/Alameda%20Longitudinal%20KRA%20Study%20Final.pdf>
20. 2021. Alameda County Early Care and Education Needs Assessment. First 5 Alameda County. [http://www.first5alameda.org/files/2021 Alameda County ECE Needs Assessment FINAL.pdf](http://www.first5alameda.org/files/2021%20Alameda%20County%20ECE%20Needs%20Assessment%20FINAL.pdf)
21. 2021. Alameda County Early Care and Education Licensed Facilities Assessment. First 5 Alameda County. [http://www.first5alameda.org/files/Facilities Needs Assessment 2022 V2.pdf](http://www.first5alameda.org/files/Facilities%20Needs%20Assessment%202022%20V2.pdf)
22. First 5 Alameda County Contractor/Program Reporting for fy 2021 - 2022